

PREFERRED
VENDORS

Caterers

Cuisine on the Green
www.cuisineonthegreen.com/catering
609-296-2137

Rentals

Ocean Tents
www.oceantents.com
609-597-9788

Accommodations

JD Thompson Inn
www.jdtbompsoninn.com
609-294-1331

The Inn at Sea Oaks Country Club
www.seaoaksc.com/inn
609-296-2656

Holiday Inn Manahawkin
www.hi-lbi.com
609-481-6100



*Photos courtesy of
Rich McMullin and Trevor Moran*



Contact us today to reserve the date
for your special day!

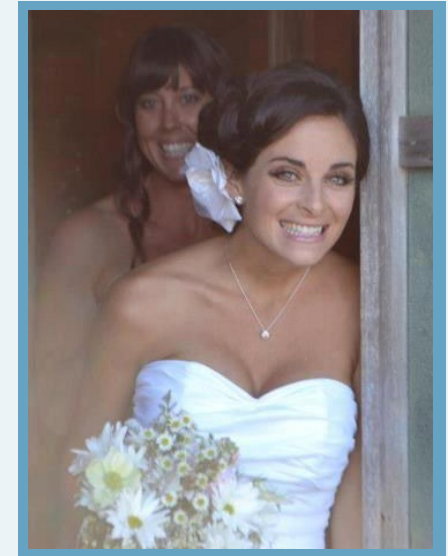


120 W Main St (Rt 9)
Tuckerton, NJ 08087

Phone: 609.296.8868
E-mail: brookes@tuckertonseaport.org
www.tuckertonseaport.org



YOUR SPECIAL DAY
DESERVES A
MEMORABLE
VENUE



A UNIQUE SETTING ON HISTORIC TUCKERTON CREEK



The peaceful surroundings of the Tucker's Island Lighthouse provide an ideal backdrop for your wedding day.

Imagine saying "I do" on the Lighthouse Porch with the historic seaport in the background. Tuckerton Seaport offers flexible reception venues accommodating up to 150 guests.

Our unique reception sites include Tucker's Island Lighthouse and/or three other historic buildings and outdoor areas. The Seaport can also accommodate a tent to fit 150 guests.

Turn your wedding dreams into reality - come to the Tuckerton Seaport and make your special day a day everyone will remember.

Our most popular venue option offers both indoor & outdoor space.

Includes Tucker's Island Lighthouse, Marshelder, Hotel DeCrab, Crest Fishery and the Boardwalk with a 20'x20' tented area.

capacity: 150

Site Rental: \$5000

Tucker's Island Lighthouse

capacity:

80-100 sit down dinner

150 cocktail reception

Ceremony Only on Seaport Grounds

\$250

Hunting Shanty

capacity: 59

Day (10am -4pm) \$250

Evening (5pm -9pm) \$500

Prices are for 4 hour site rental. Catering & rental of tents and equipment are not included.

Ceremony rehearsal time is included at no charge.

\$1000 non-refundable deposit required to hold your date.

\$1000 security deposit required.

\$1,000,000 insurance required naming

Tuckerton Seaport as an additional insured.

(available through your insurance company)

Tuckerton Seaport is handicap accessible.

A golf cart is available to bring guests from the parking lot.

Smoking permitted on clamshell area only.

Prices are effective October 1, 2016 and are subject to change.



Tuckerton Seaport & Baymen's Museum



120 W Main St (Rt 9)
Tuckerton, NJ 08087

Phone: 609.296.8868

E-mail: brookes@tuckertonseaport.org

www.tuckertonseaport.org